



Since 1924

EXCEED EXPECTATION

©MG Motor South Africa 2024. MG Motor South Africa offers this information as a general guide to product specifications. All data that applies to MY24 models only is believed to be correct as of December 2024; however as product development is an ongoing process, changes may occur from time to time which may not be necessarily reflected herein. To the maximum extent permitted by law, MG Motor South Africa shall not be liable for any reliance placed by any person on the content of this publication. MG Motor South Africa reserves the right to change specifications without notice. Accordingly, this information should not be regarded as an infallible guide to correct specifications, nor does it constitute an offer for sale of any particular vehicle. Whilst all care has been taken to provide you with information regarding the general use of MG products, you should not rely solely on the information provided in this specification sheet. Dealers are not agents of MG Motor South Africa and have no authority to bind MG Motor South Africa by an express or implied undertaking or representation.

Colours in this brochure may vary to those on the vehicle. ~ Warranty T&C's at www.mgmotor.co.za/warranty. Bluetooth® is a registered trademark and logo of Bluetooth SIG, Inc. ZA2024. Actual South African specifications may vary from the vehicle shown.

www.mgmotor.co.za



Since 1924

EXCEED
EXPECTATION

THE NEW MG HS
PERFORMANCE MEETS BEAUTY





MG HS

Performance Meets Beauty

From the inside out, technology takes the lead, allowing you to enjoy comfort in silence. The low wind noise body design and dual spoilers effectively enhance driving stability. The striking headlights are sharp and vivid, giving the HS its unique charm whether in motion or at rest.

Equipped with an efficient powertrain and MG Pilot advanced driver safety systems, every journey becomes effortless. The spacious boot, seven airbags, dual 12-inch screens, wireless charging, and a seven-year warranty make the HS an ideal choice for both tech enthusiasts and practical users.

It perfectly combines quality and practicality, making it the best choice for you and your family.

A MANIFESTATION OF PREMIUM BEAUTY

The HS boasts a dynamic and sporty design that reflects the MG brand's distinctive DNA, combined with a practical and high-quality interior. It offers a premium and comfortable driving experience for you and your family.

THE SHARD TAILLAMP

Inspired by London's The Shard, the design features deconstructed rectangles forming X-shaped geometries, resembling a sharp, crystalline gaze at night.



HUNTING EYE HEADLAMP

Inspired by predators, the design creates a vigorous and powerful headlight.



LEAPING SHOULDER LINE

Inheriting MG's iconic body proportions, the design features a high shoulder line alongside a slender and sharp window shape. It represents the power and agility found in the HS.



SPORTY REAR

The dual spoiler design at the rear of the vehicle is aerodynamic, reducing air resistance and saving fuel. The skid plate and 3D bumper designs further enhance the vigorous and dynamic character.



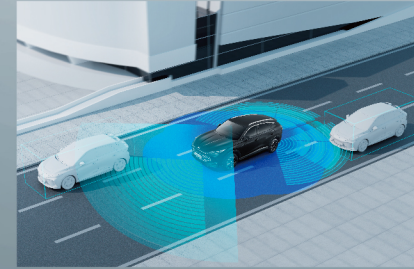
DUAL 12.3-INCH FLOATING TECHNOLOGY SCREENS

All models come equipped with a floating dual-screen setup composed of two 12.3-inch displays, offering a technologically convenient and comprehensive information window.



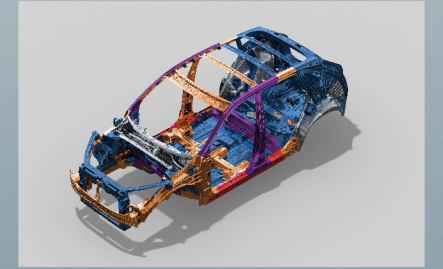
7 AIRBAGS FOR EXTRA PROTECTION

All models are equipped as standard with 7 airbags, offering comprehensive protection and minimising injury during impact.



ADVANCE DRIVER ASSISTANCE AS STANDARD ON ALL MODELS

The HS is equipped with MG Pilot, featuring two millimetre-wave radar sensors and one monocular camera, to provide a comprehensive set of 14 driving assistance functions.



HIGH-STRENGTH STEEL BODY

The vehicle is constructed with 82% high-strength steel, providing safety protection that surpasses industry standards for its class.

SAFETY YOU CAN TRUST

All models boast a top-rated Euro NCAP* 5-star safety rating and are equipped with our MG Pilot system, which includes 14 driving assistance features. The new MG HS has undergone extensive on-road testing in various extreme environments across Europe, the UK, and Australia to ensure high quality and durability. The effective integration of hardware and software guarantees driving safety.

*5-Star Euro NCAP rating based on the HS 1.5T model tested.

EXCELLENT PERFORMANCE MASTERS THE ROAD

The exceptional powertrain combination and finely tuned vehicle control system, along with innovations in chassis architecture, allow the HS to navigate the road effortlessly at anytime, anywhere.



1.5T & 2.0T ENGINES AVAILABLE

Maximum power of 125kW, peak torque of 275Nm, and a combined fuel consumption of 6.9L per 100km (NEDC).

Maximum power of 170kW, peak torque of 370Nm and a combined fuel consumption of 8.6L per 100km (NEDC)



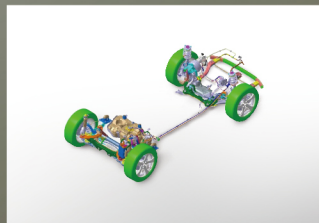
7 DCT TRANSMISSION

An independent lubrication control system, coupled with zero-leakage, high-pressure, and pre-filled oil level technologies, ensures abundant power and smooth driving.



9AT TRANSMISSION

Excellent starting torque, seamless shifting during acceleration, outstanding high-speed performance, and low engine RPM at high cruise speeds. Combined with a high-efficiency oil pump, it always maintains efficient power transfer and superb fuel economy.



BRITISH TUNING BALANCING RIDE COMFORT WITH PRECISE HANDLING

Based on the SIGMA-A architecture, tuned by British engineers, the vehicle's vibration is filtered for a more comfortable ride and more precise steering.



ENJOY THE BEAUTY OF PRACTICALITY AND REFINEMENT

For comfort and practicality, features like wireless charging, seat heating adjustment, and folding rear seats make the HS suitable for your lifestyle in every way.



LUGGAGE SPACE

The extra-large boot offers even more space when the rear seats are folded down, so you can confidently carry everything needed for your adventures.



WIRELESS PHONE CHARGING*

Equipped with wireless phone charging, it's convenient and user-friendly.



MULTI FUNCTIONAL SEATS

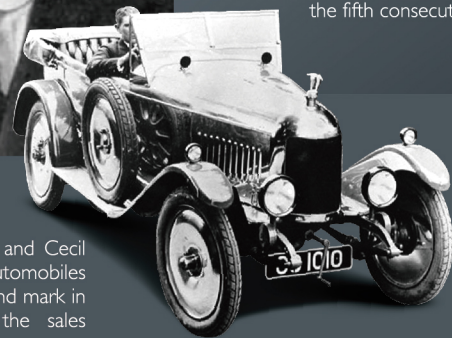
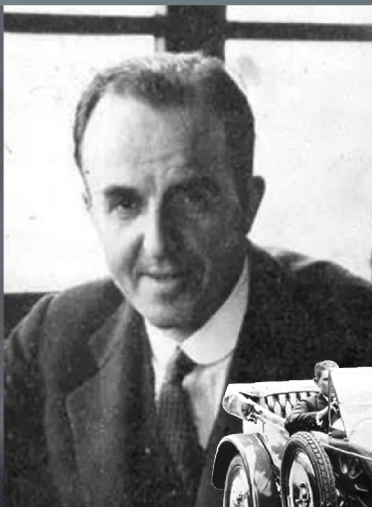
Standard seat heating* and multi-way adjustment greatly enhance the comfort and riding experience.



GREAT NOISE AND VIBRATION CONTROL

We invested significant time to make the car quieter. We added special foam in various locations and installed insulation in critical areas. These modifications help reduce engine noise and wind sounds, resulting in a serene cabin and driving experience.

* Only available on Luxury trim models.



| HISTORY

In 1924, automobile industrialist and designer William Morris and Cecil Kimber joined forces to create a classic in the history of British automobiles - MG. Over the past 100 years, MG has left a deep and profound mark in automotive history, with the world record of EX181, the sales championship of MGB, and the Queen's preferred carriage... Legends live forever.

***FIND OUT MORE AT WWW.MGMOTOR.CO.ZA / CENTENARY.**

| ACHIEVEMENTS

In 2021

cumulative exports reached 84 countries across six continents, with export volumes breaking the million mark.

In 2023

global sales exceeded 840,000 units, securing the title of "China's top single-brand car exporter" for the fifth consecutive year.

| TECHNOLOGY

Research and Development and Design Centers

Silicon Valley, London, Tel Aviv - 3 major R&D innovation centers
London, Munich, Tokyo - 3 major design centers

Production Bases and Factories

Thailand, Indonesia, India, Pakistan - 4 production bases and KD factories
Over 100 parts production and R&D bases.

| AFTERSALES

Marketing Service Network and Routes

Over 1800 marketing service outlets

Launched 7 self-operated international routes to Southeast Asia, Mexico, Western South America, and Europe.

In 2024, plans to establish a manufacturing plant and a research and development centre in Mexico.

South African dealers now offer a full range of models, all backed by a 7-year warranty.

ABOUT MG

| TECHNICAL SPECIFICATION | HS | HS | HS | HS |
|--------------------------------------------------------|------------------------|------------------------|------------------------|------------------------|
| | 1.5T DCT COMFORT | 1.5T DCT LUXURY | 2.0T AT COMFORT | 2.0T AT LUXURY |
| DIMENSIONS/ CAPACITIES | | | | |
| L/W/H mm | 4655/1890/1655 | 4655/1890/1655 | 4655/1890/1655 | 4655/1890/1655 |
| Wheel Base mm | 2765 | 2765 | 2765 | 2765 |
| Trunk Volume (L) | 507/1484 | 507/1484 | 507/1484 | 507/1484 |
| Fuel Tank Capacity | 55 | 55 | 65 | 65 |
| POWERTRAIN | | | | |
| Displacement ml | 1496 | 1496 | 1986 | 1986 |
| Engine kW/hp | 125/275 | 125/275 | 170/370 | 170/370 |
| Transmission | DCT | DCT | AT | AT |
| Towing Braked/unbraked kg | 750/1500 | 750/1500 | 1700/1500 | 750/1500 |
| Top Speed km/h | 195 | 195 | 220 | 220 |
| Driving System | FWD | FWD | FWD | FWD |
| Drive Mode Selection | - | - | • | • |
| WHEELS AND TYRES | | | | |
| Wheels | 19 inch Alloy Rim | 19 inch Alloy Rim | 19 inch Alloy Rim | 19 inch Alloy Rim |
| Tyres | 225/55 R19 Bridgestone | 225/55 R19 Bridgestone | 225/55 R19 Bridgestone | 225/55 R19 Bridgestone |
| FEATURES | | | | |
| Tilt & Telescopic Steering Column Adjustment | • | • | • | • |
| Steering Column Lock | • | • | • | • |
| ESP Electronic Stability Program | • | • | • | • |
| ABS Anti-braking System | • | • | • | • |
| EBC Electric Brake-force Distribution | • | • | • | • |
| CBC Cornering Brake Control | • | • | • | • |
| TCS Traction Control System | • | • | • | • |
| VDC Vehicle Dynamic Control | • | • | • | • |
| HAZ Hazard Control | • | • | • | • |
| HHC Hill Hold Control | • | • | • | • |
| BDW Brake Disc Washing | • | • | • | • |
| Hill-start Assist Control | • | • | • | • |
| Autohold | • | • | • | • |
| Direct Tyre Pressure Measure System (TPMS) | • | • | • | • |
| Electronic Shift | • | • | • | • |
| Electric Parking Brake (EPB) | • | • | • | • |
| Trailer Port | • | • | • | • |
| Engine Beauty Cover | • | • | • | • |
| Front Impact Sensor | • | • | • | • |
| Side Impact Sensor | • | • | • | • |
| SAFETY & ANTI THEFT | | | | |
| Driver's Seat Belt Reminder | • | • | • | • |
| Passenger's Seat Belt Reminder | • | • | • | • |
| Rear Row Seatbelt Reminder | • | • | • | • |
| Driver seatbelt with pretensioner and load limiter | • | • | • | • |
| Passenger seatbelt with pretensioner and load limiter | • | • | • | • |
| Front Seat Belt Height Manual Adjustment | • | • | • | • |
| Rear seatbelt with pretensioner and load limiter (LHR) | • | • | • | • |

| TECHNICAL SPECIFICATION | HS | HS | HS | HS |
|--------------------------------------------|------------------|-----------------|-----------------|----------------|
| | 1.5T DCT COMFORT | 1.5T DCT LUXURY | 2.0T AT COMFORT | 2.0T AT LUXURY |
| Front row seat,Antisubmarine + Antwhiplash | • | • | • | • |
| Rear row seat,Antisubmarine + Antwhiplash | • | • | • | • |
| Rear Child Lock | • | • | • | • |
| ISOFIX + Topthether Anchorage (X3) | • | • | • | • |
| Rear Three Headrest | • | • | • | • |
| DAB + PAB | • | • | • | • |
| Two Side Airbags | • | • | • | • |
| Two Curtain Airbags | • | • | • | • |
| DMS | • | • | • | • |
| Farside Airbag | • | • | • | • |
| Airbag warning label | • | • | • | • |
| Immobilisation | • | • | • | • |
| Four Doors & Tail Gate Alarm System | • | • | • | • |
| Hood Alarm System | • | • | • | • |
| Rear Buffer Beam | • | • | • | • |
| Adaptive Cruise Control | • | • | • | • |
| Autonomous Emergency Brake | • | • | • | • |
| Front Collision Warning | • | • | • | • |
| Rear Collision Warning | • | • | • | • |
| Lane Departure Warning | • | • | • | • |
| Lane Departure Prevention | • | • | • | • |
| Emergency Lane Keep Assist | • | • | • | • |
| Blind Spot Detection | • | • | • | • |
| Lane Change Assist | • | • | • | • |
| Door Open Warning | • | • | • | • |
| Rear Cross Traffic Alert | • | • | • | • |
| Rear Cross Traffic Braking | • | • | • | • |
| Driver Monitoring System | • | • | • | • |
| Intelligent Cruise Assist | • | • | • | • |
| EXTERIOR | | | | |
| LED headlight with manual Levelling | • | • | • | • |
| Automatic Headlamp | • | • | • | • |
| Headlamp Follow Me Home | • | • | • | • |
| High Mounted Brake Light | • | • | • | • |
| LED Daytime Running Lights | • | • | • | • |
| Rear Fog Lamp | • | • | • | • |
| Front Fog Lamp | • | • | • | • |
| LED Tailamp | • | • | • | • |
| Power Control Door Mirrors | • | • | • | • |
| Door Mirrors Anti-fog | • | • | • | • |
| Electrical folding Door Mirror | - | - | - | - |
| Door Mirror Remote Control | - | - | - | - |
| Door Mirrors with Side Indicator (LED) | • | • | • | • |
| Boneless Wiper | • | • | • | • |
| Rear Wiper | • | • | • | • |
| Rain Sensor wiper | • | • | • | • |

| TECHNICAL SPECIFICATION | HS | HS | HS | HS |
|---------------------------------------------------------------------------------|------------------|-----------------|-----------------|----------------|
| | 1.5T DCT COMFORT | 1.5T DCT LUXURY | 2.0T AT COMFORT | 2.0T AT LUXURY |
| Front and Rear Electric Windows (Driver side express up and down with antitrap) | • | • | • | • |
| Rear Window Heating | • | • | • | • |
| Glass Printing Antenna | • | • | • | • |
| Normal Door Handle | • | • | • | • |
| Spoiler | • | • | • | • |
| Manual Tailgate | • | - | - | - |
| Power Tailgate | - | • | • | • |
| Hood Beauty Cover | • | • | • | • |
| Tinted Glass | • | • | • | • |
| Rear Privacy Glass | - | • | • | • |
| Silver Roof Traller | • | • | • | • |
| Hazard Stop Light | • | • | • | • |
| Reversing Light | • | • | • | • |
| Glove Box Lamp | • | • | • | • |
| INTERIOR & ELECTRIC SYSTEM | | | | |
| Microfibre Steering Wheel (PU) | • | • | • | • |
| Sunglasses Box | • | • | • | • |
| Leather Gear Lever (AT) | • | • | • | • |
| Gear Shift Display | • | • | • | • |
| Backlight Button | • | • | • | • |
| Virtual cockpit | • | • | • | • |
| 12.3" Dual Screen Entertainment System | • | • | • | • |
| Cluster Brightness Adjustment | • | • | • | • |
| Trip Computer | • | • | • | • |
| Steering Wheel Recovery Reminder | • | • | • | • |
| Service Interval Indicator | • | • | • | • |
| Front 2 USB ports | • | • | • | • |
| Rear 2 USB ports | • | • | • | • |
| FM/AM | • | • | • | • |
| DAB | • | • | • | • |
| 6 Speakers | • | - | - | - |
| 8 Speakers | - | - | - | - |
| Bluetooth | • | • | • | • |
| Carplay & Android Auto | • | • | • | • |
| Rear Parking Sensor | • | • | • | • |
| Front Parking Sensor | - | • | - | - |
| 360° View Camera (HD) | • | • | • | • |
| Multifunctional Steering Wheel | • | • | • | • |
| Light on Warning | • | • | • | • |
| Remote Control key | • | • | • | • |
| Smart Key | • | • | • | • |
| Keyless Entry System | • | • | • | • |
| One button start | • | • | • | • |
| Automatic Door Latch Function | • | • | • | • |
| Remote Unlock Trunk | • | • | • | • |
| Driver's 6way Electrically Adjustable Seat | • | • | • | • |

| TECHNICAL SPECIFICATION | HS | HS | HS | HS |
|-------------------------------------------|------------------|-----------------|-----------------|----------------|
| | 1.5T DCT COMFORT | 1.5T DCT LUXURY | 2.0T AT COMFORT | 2.0T AT LUXURY |
| Passenger's 4way Manually Adjustable Seat | • | - | • | - |
| Passenger's 4Way Power Adjustable Seat | - | • | - | • |
| Driver's 4 - way power lumbar support | • | • | - | • |
| PVC Seat with hole | • | • | • | • |
| Front Seat Pocket | • | • | • | • |
| Front Seat Heating (3 levels) | - | • | - | • |
| Front Center Armrest | • | • | • | • |
| 60/40 Foldable Rear Seat | • | • | • | • |
| Rear arm rest with cup holder | • | • | • | • |
| Electric AC Control | • | - | - | - |
| Dual Zone Automatic Climate Control | - | • | • | • |
| Dust Filter (PM2.5) | • | • | • | • |
| Rear Aircondition Vent | • | • | • | • |
| 12V Charger in the First Row | • | • | • | • |
| Electronic Panoramic Sunroof | - | • | • | • |
| Survivors with Mirror and Illumination | • | • | • | • |
| Gloves Box with Illumination | • | • | • | • |
| Front Reading Light | • | • | • | • |
| Rear Reading Light | • | • | • | • |
| Wireless Charger for Phone | - | • | - | • |
| BOOT | | | | |
| Boot Illumination | • | • | • | • |
| Trunk Covering Material Curtain | • | • | • | • |
| Storage box in the trunk | • | • | • | • |
| EXTERIOR COLOURS | | | | |
| Pearl Black | o | o | o | o |
| Pearl White | o | o | o | o |
| Rover Grey | o | o | o | o |
| Sterling Silver | o | o | o | o |
| Arctic Blue | o | o | o | o |
| Dynamic Red | o | o | o | o |
| INTERIOR COLOUR | | | | |
| Dark | • | • | • | • |